



RoHS

TOPTEK®  
HARDWARE ELECTRONIC MANUFACTURER



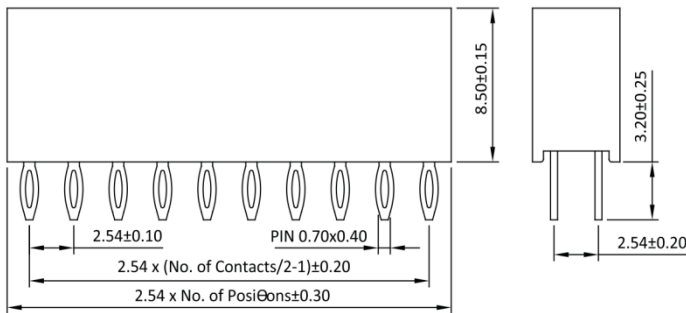
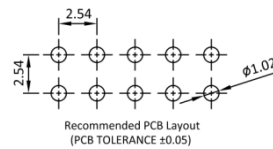
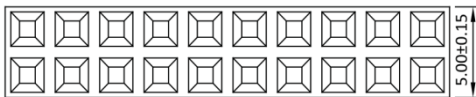
## Female Header 2.54mm 2 Row H=8.5mm Press Fit Type

### Specifications

Current Rate:3 AMP  
Insulation Resistance:1000MΩ Min.  
Contact Resistance:20mΩ Max.  
Dielectric Voltage:1000V AC for one minute  
Operation Temperature:-40°C to +105°C

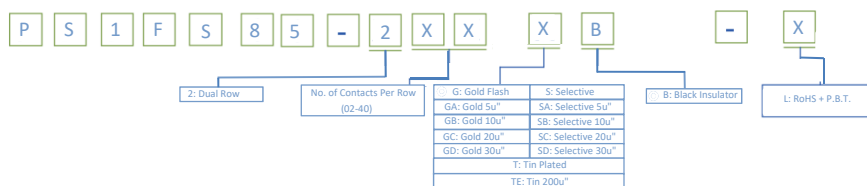
### Material

Insulator:Hi-Temp. Thermoplastic, UL 94V-0  
Terminal:Copper Alloy  
Plating:Gold Plated



Part No.:PS1FS85-2XX-X

## ORDER INFORMATION



©:Standard Recommend

